



## Order Pickers

# N20 – N25

Capacity 2.0 t – 2.5 t | Series 4600

PB

ION

Versatile order picking talent

- Multi-purpose low-lift order picker for efficient picking at floor level
- Ideally suited for fast transport over long distances
- Innovative vehicle design with battery behind the operator's stand ensures optimal view of the warehouse environment
- Version with integrated Li-ION battery offers outstanding maneuverability due to particularly compact dimensions
- Optionally liftable operator's platform allows a picking height of up to 2.8 metres
- Choice between lead-acid or Li-ION battery and many equipment options



# STANDARD AND OPTIONAL EQUIPMENT

Manufacturer's type designation/equipment		N20	N25
Safety	Key switch	●	●
	Log in PIN code access	○	○
	Front chassis protection	○	○
	Flashing beacon	○	○
	Linde BlueSpot – visual warning of truck presence	○	○
	Automatic speed reduction in curves	●	●
	Cushioned knee protection	○	○
	Rear foot protection	○	○
Operation	Inching control (forward only or forward/backward)	○	○
	Initial lift control	○	○
	Proportional speed reduction	○	○
	Load backrest: 1200 mm or 1800 mm high	○	○
Workplace	Damped platform	●	●
	Lifting platform	○	○
	Height adjustable Linde Steering Wheel	○	○
	Height adjustable backrest incl. foldable seating support	○	○
	Standard display	●	●
	Multifunction colour display: hourmeter, maintenance indication, battery discharge indicator and internal fault code indication	○	○
	Front or rear accessory supports	○	○
	Support for data terminal with 24V power supply cable	○	○
Forks	Support clipboard DIN A4 and support for scanner	○	○
	Fork carriage width: 520 mm, 540 mm, 560 mm	○	○
	Fork length: from 1190 mm to 2900 mm	○	○
Axles and tyres	Overhang: 185 mm, 545 mm, 775 mm	○	○
	Drive wheel: heavy duty	●	●
	Drive wheel: cushion rubber	○	○
	Drive wheel: high grip	○	○
	Single load wheels, polyurethane	●	–
	Tandem load wheels, polyurethane	○	●
	Tandem load wheels, polyurethane greasable	○	○
	Single castor wheel	●	●
Drive and brake system	Tandem castor wheel	○	○
	Tandem castor wheel, greasable	○	○
	Power-assisted steering	●	●
	2.3 kW AC motor (maintenance-free) (10 km/h)	●	●
	3 kW AC motor (maintenance-free) (12-14 km/h)	○	○
	Electromagnetic braking system	●	●
	Li-ION integrated battery technology	○	○
	Fixed lateral outlet, 3 Pz (S12)	○	○
	Fixed lateral outlet, 4 Pz (S12)	○	○
	Lateral outlet, 3 Pz (S12)	○	○
	Lateral outlet, 4 Pz (S12)	○	○
	Lateral outlet, 4 Pz (S01)_High	○	○
Battery housing 4 Pz (S12) SAFT	○	○	
Opportunity charging plug	○	○	
Integrated charger for lead-acid and Li-ION batteries	○	○	
Environ- ment	Coldstore protection to -35°C (in/out)	○	○
Service	CAN bus technology	●	●
Digitalisation	myLinde – fleet management	○	○
	myLinde – fleet analytics	○	○
	Access control – via PIN	○	○
	Access control – via RFID	○	○
	Data transmission Wifi	○	○
	Data transmission online	○	○
	Shock detection – impact damage monitoring	○	○
	Usage analysis – digital usage analysis	○	○
	Trouble codes – automated error code transmission from truck	○	○
	Pre-Op Check	○	○

● Standard equipment

○ Optional equipment

– Not available

# TECHNICAL DATA (according to VDI 2198)

	No.	Description	Unit	Linde MH	
				N20	N25
Characteristics	1.1	Manufacturer (abbreviation)		Linde MH	Linde MH
	1.2	<b>Manufacturer's type designation</b>		<b>N20</b>	<b>N25</b>
	1.2a	Series		4600-00	4600-00
	1.3	Drive		Battery	Battery
	1.4	Operation		Order Picker	Order Picker
	1.5	Rated capacity/rated load	Q (t)	2.0	2.5
	1.6	Load centre distance	c (mm)	600	1200
	1.8	Load distance, centre of drive axle to fork	x (mm)	897/1005 <sup>1)</sup> 2)	1507/1615 <sup>1)</sup> 2)
	1.9	Wheelbase	y (mm)	1957/2065 <sup>1)</sup> 2) 3) 4)	2567/2675 <sup>1)</sup> 2) 3) 4)
Weight	2.1	Service weight	kg	872	964
	2.2	Axle loading, laden front/rear	kg	897/1975	982/2482
	2.3	Axle loading, unladen front/rear	kg	608/264	694/270
Tyres/chassis	3.1	Tyres: solid rubber, superelastic, pneumatic, polyurethane		Polyurethane	Polyurethane
	3.2	Tyre size, front		Ø 254 × 102	Ø 254 × 102
	3.3	Tyre size, rear		Ø 85 × 105	Ø 85 × 80 <sup>16)</sup>
	3.4	Auxiliary wheels (dimensions)		Ø 140 × 50	Ø 140 × 50
	3.5	Wheels, number front/rear (x = driven wheels)		1x + 1/2	1x + 1/4
	3.6	Tread, front	b10 (mm)	475	475
	3.7	Tread, rear	b11 (mm)	348 (368/388/498)	348 (368/388/498)
Dimensions	4.4	Lift	h3 (mm)	130	130
	4.8	Seat height relating to SIP/stand height	h7 (mm)	874 - 1041 <sup>9)</sup> /130 <sup>3)</sup>	874 - 1041 <sup>9)</sup> /130 <sup>3)</sup>
	4.9	Height drawbar in driving position min./max.	h14 (mm)	1258 <sup>7)</sup>	1258 <sup>7)</sup>
	4.14	Stand height, elevated	h12 (mm)	1182/1197 <sup>8)</sup>	1182/1197 <sup>8)</sup>
	4.15	Height, lowered	h13 (mm)	85	85
	4.19	Overall length	l1 (mm)	2433 <sup>3)</sup> 4)	3633 <sup>3)</sup> 4)
	4.20	Length to fork face	l2 (mm)	1243 <sup>3)</sup> 4)	1243 <sup>3)</sup> 4)
	4.21	Overall width	b1/b2 (mm)	800	800
	4.22	Fork dimensions DIN ISO 2331	s/e/l (mm)	61 (78 max.)/172/1190	61 (78 max.)/172/2390
	4.25	Fork spread	b5 (mm)	520 (540/560/670)	520 (540/560/670)
	4.26	Distance between wheel arms/loading surfaces	b4 (mm)	176 (196/216/326)	176 (196/216/326)
	4.32	Ground clearance, centre of wheelbase	m2 (mm)	24/154 <sup>9)</sup> 10)	24/154 <sup>9)</sup> 10)
	4.33	Load dimension b12 × l6	b12 × l6 (mm)	800 × 1200	800 × 2400
	4.34	Aisle width predetermined load dimensions	Ast (mm)	2846/2897 <sup>3)</sup> 4) 11)	3932/3943 <sup>3)</sup> 4) 11) 17)
	4.35	Turning radius	Wa (mm)	2144/2252 <sup>3)</sup> 4) 11)	2754/2862 <sup>3)</sup> 4) 11) 17)
Performance data	5.1	Travel speed, laden/unladen	km/h	9/12 <sup>12)</sup>	9/12 <sup>12)</sup>
	5.1.1	Travel speed, laden/unladen, backwards	km/h	8/11	8/11
	5.2	Lifting speed, laden/unladen	m/s	0.07/0.111	0.064/0.089
	5.3	Lowering speed, laden/unladen	m/s	0.084/0.067	0.068/0.066
	5.8	Max. gradeability, laden/unladen	%	7.0/12.0 <sup>13)</sup> 14)	7.0/12.0 <sup>13)</sup> 14)
	5.9	Acceleration time, laden/unladen	s	6.1/4.8	6.4/4.8
	5.10	Service brake		Electromagnetic	Electromagnetic
Electric-engine	6.1	Drive motor rating S2 60 min	kW	3	3
	6.2	Lift motor rating at S3 15%	kW	2.2/5%	2.2/5%
	6.3	Battery according to DIN 43531/35/36 A, B, C, no		No	No
	6.4	Battery voltage/nominal capacity K5	(V)/(Ah) o. kWh	(24)/(250)	(24)/(250)
	6.4.a	Battery energy content	kWh	7.1/6 <sup>15)</sup>	7.1/6 <sup>15)</sup>
	6.5	Battery weight (±5%)	kg	127	127
	6.6	Energy consumption according to DIN EN 16796	kWh/h	0.45	0.48
	6.6.1	CO2 equivalent according to DIN EN 16796	kg/h	0.2	0.3
	6.7	Turnover output according to VDI 2198	t/h	129	157
6.8	Turnover efficiency according to VDI 2198	t/kWh	67.9	71.4	
Drive/lifting mechanism	8.1	Type of drive unit		AC control	AC control
Additional data	10.7	Sound pressure level LpAZ (at the operator's seat)	dB(A)	< 70	< 70

1) (±5 mm)

2) Forks upraised/lowered

3) With lifting platform +60 mm

4) With integrated Li-ION battery; with tray 3 PzS +190 mm; with tray 4 PzS +290 mm

5) +15 mm with lifting platform option standard version; +30 mm with lifting platform option damped version

6) Min.-max.

7) +72 mm with lifting platform option standard version;

+87 mm with lifting platform option damped version; with tiller adjustment option, h14 setting range = -19 up to +89 mm

8) With lifting platform option standard/damped version

9) Minimum ground clearance under the chassis with mandatory foot guard = 24 mm

10) Min./max.

11) Including a 200 mm (min.) operating aisle clearance

12) Travel speed, without load up to 14 km/h as option

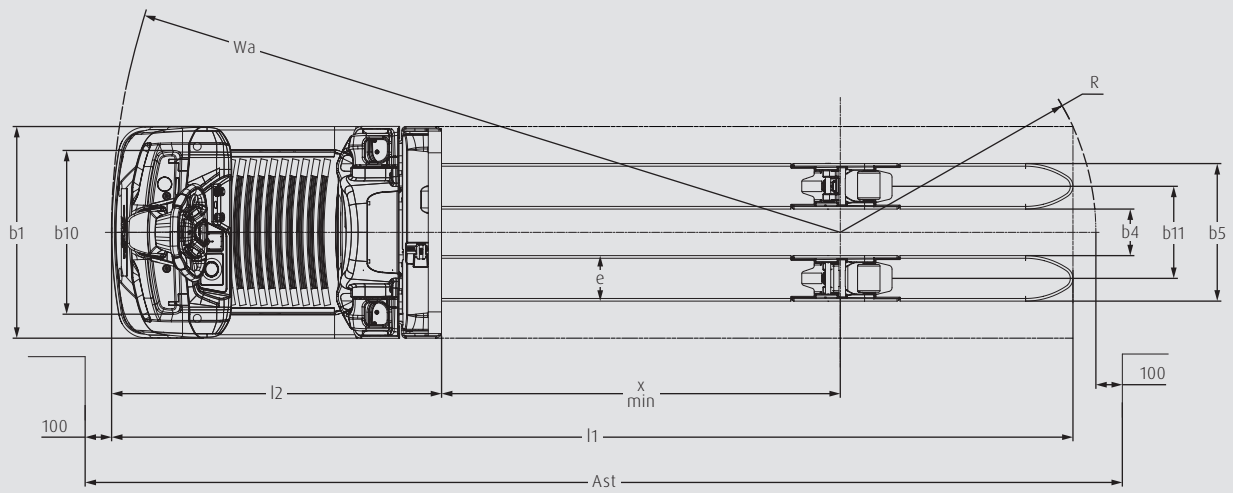
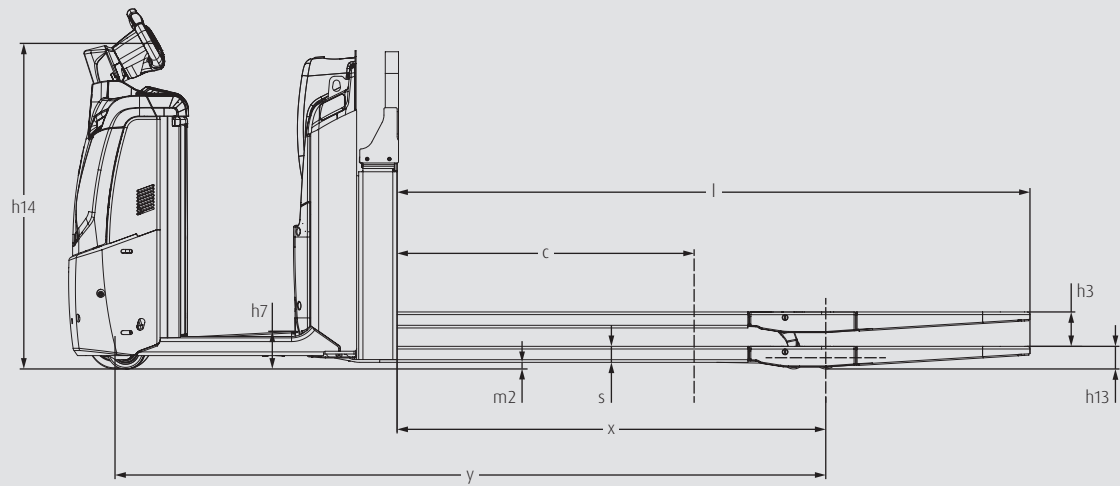
13) On rounded edge slope with forks/arms raised, if possible

14) The geometric limit on unrounded edge slope lies between 8.4% (fork length 2900 mm with tray 4 PzS) and 10.7% (fork length 1190 mm integrated Li-ION battery)

15) Installed/usable energy content

16) With tandem load wheels

17) With forks length 2390 mm/x = 1507 mm/pull bar version; for other fork dimensions, see stacking aisle widths or contact your sales representative



# CHARACTERISTICS



Linde BlueSpot: Silent and visible safety

## Safety

- Excellent visibility for early detection of hazards
- Robust chassis construction ensures a protected and safe driving position
- Two braking systems provide maximum control in every situation
- Linde Curve Assist automatically adjusts the speed when cornering
- Increased safety through optional Linde Safety Guard and Linde BlueSpot



Adjustable backrest with foldable operator's seat

## Ergonomics

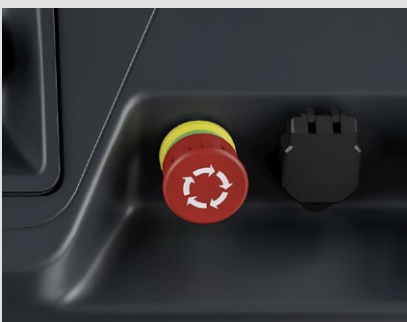
- Low, wide entry for easy access from both sides
- Cushioned operator's platform as standard protects against vibrations
- Optional pneumatic suspension platform for maximum driving comfort
- Comfortable control with ergonomic Linde Steering Wheel
- Optional adaptable operator's platform with adjustable backrest and folding seat



Liftable operator's platform

## Handling

- High travel speed of up to 14 km/h for fast goods handling
- Stable 4-point support ensures a safe driving experience
- Compact design and small turning radius for optimum maneuverability
- Optional pedestrian function enables efficient order picking over short distances
- Optional liftable operator's platform for working on second rack level



CAN bus for fast fault diagnosis

## Service

- Robust construction and maintenance-free three-phase technology for high availability
- Long service intervals of up to 1,000 operating hours
- Easy access to all main components enables time-saving maintenance work
- CAN bus connection for fast fault diagnosis and vehicle data readout
- Vehicle parameters can be individually adjusted via CAN bus connection

Subject to modification in the interest of progress. Illustrations and technical specifications could include options and are not binding for actual constructions. All dimensions subject to usual tolerances.



DS\_N20-N25\_4600\_en\_A\_0226

**ncnielsen**

Nørregade 66, DK-7860 Balling | Tlf.: +45 99 83 83 83  
nc-nielsen.dk | info@nc-nielsen.dk